



## Submersible Slurry Pump

# KBS

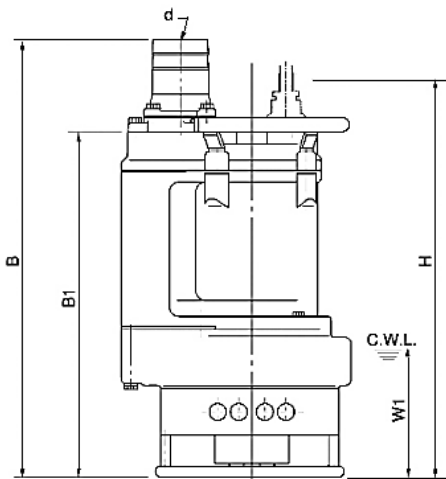
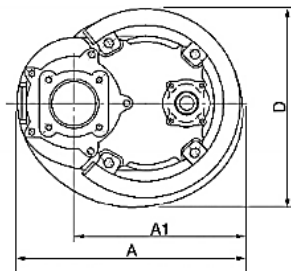
- Submersible slurry pump with a 4-pole motor for an increased lifetime and greater convenience.
- KBS-based extra powered submersible slurry pumps with the agitator.
- Slim design with a top discharge enabling installation in smaller casings.
- For bentonite mixed water in foundation works or muddy water in civil engineering works.

### Application

- Civil engineering, Building sites, Basements or utility pits; Sewage treatment plants; General pumping purposes.
- Pumping fluid: Sludge, Sludge liquids containing, Mud and Bentonite

### Specifications:

- Capacity: up to 174m<sup>3</sup>/h
- Head: up to 23.5 meters
- Discharge: 80mm(3") to 150mm(6")
- Power: 4KW (5-1/3HP) to 9KW (12HP)
- Power supply: 3 ph / 380V±10% / 50Hz;60Hz
- Insulation class: F
- Protection class: IP68
- Cable Length: 8 meters
- Water temperature: up to 40 °C
- Max. water depth: 30 meters



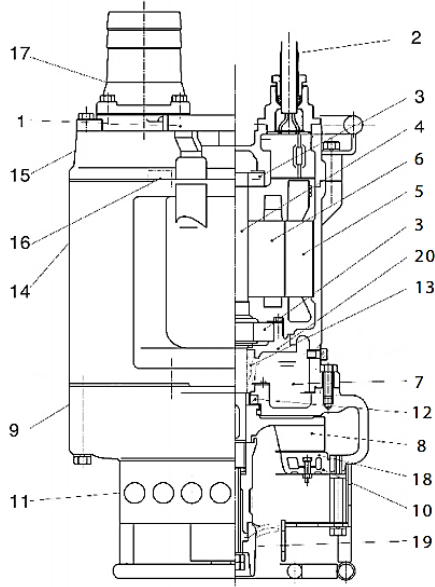
Model	d	A	A1	B	B1	D	H	W1
80KBS44	50	350	260	765	666	326	730	250
100KBS46	100	415	305	848	688	373	730	250
150KBS49	150	434	324	869	709	407	776	250



## Submersible Slurry Pump

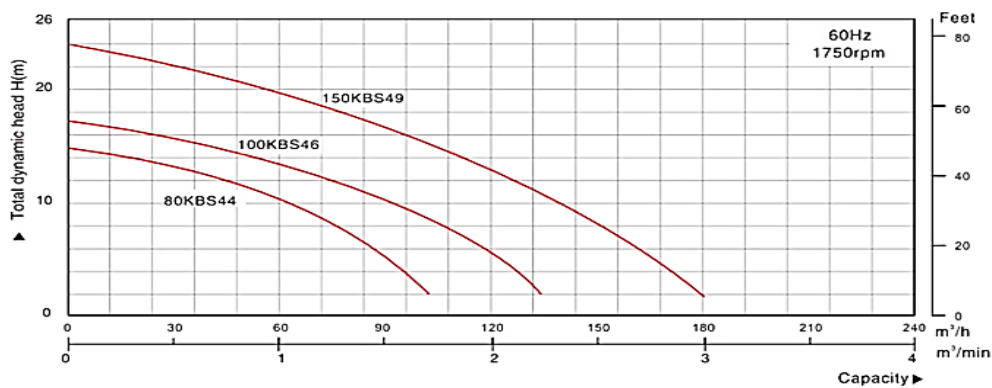
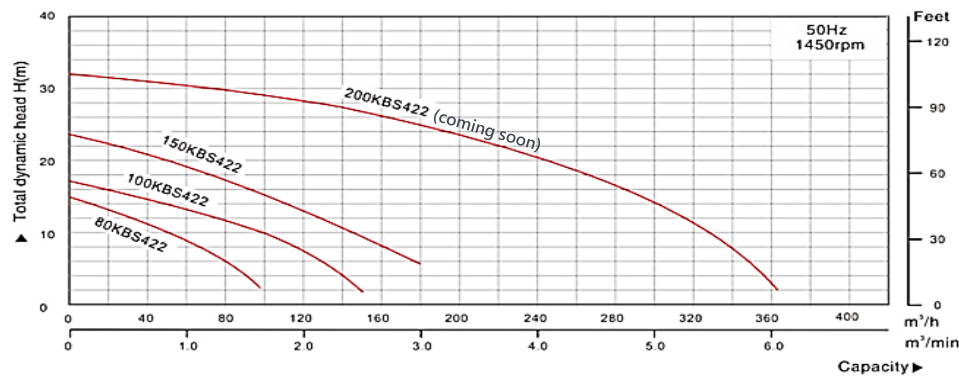


Performance Curves:



No.	Part Name	Material
1.	Handle	Steel
2.	Cable	2PNCT-F
3.	Bearing	Ball bearing
4.	Shaft	AISI420SS
5.	Rotor	/
6.	Stator	/
7.	Lube Oil	/
8.	Impeller	Chromium iron casting
9.	Pump Body	Cast iron
10.	End Plate	Cast iron
11.	Filter	Steel
12.	Oil Seal Bracket	/
13.	Mechanical Seal	Sic-sic/ Sic-sic
14.	Motor Body	Cast iron
15.	Upper Cover	Cast iron
16.	Motor Protector	/
17.	Hose Coupling	Cast iron
18.	Suction Plate	Chromium iron casting
19.	Agitator	Chromium iron casting
20.	Bearing House	Cast iron

Materials of Construction:



Model	Motor Power	Outlet	Impeller Passage	Max. Head (M)		Max. Capacity (m³/min)		N.W.	G.W.	Packing Size
	KW	mm	mm	50Hz	60Hz	50Hz	60Hz	Kg	Kg	cm
80KBS44	4	80	30	14.8	14.5	1.65	1.70	105	113	83x42x47
100KBS46	6	100	30	16.9	16.5	2.50	2.35	145	156	92x48x52
150KBS49	8	150	30	21.5	23.5	2.85	2.90	170	184	94x50x56